

Trade Data for The Week Ended on 09 Aug 2012



Weekly Indices - Sector wise

Index Name	Week Ended on 09 Aug 2012	Week Ended on 02 Aug 2012	Var (points)	Var %
MSM30 Index	5,463.43	5,464.73	↓ -1	↓ -0.02%
Financial Index	6,170.57	6,094.34	↑ 76	↑ 1.25%
Industrial Index	6,663.51	6,662.74	↑ 1	↑ 0.01%
Services Index	2,601.09	2,601.88	↓ -1	↓ -0.03%



Weekly Market Statistics

Date	MSM 30	No. Of Shares Traded	Value Of Shares Traded	Bonds Traded	Value of Traded Bonds	No. of Trades	Total No. of Securities Traded	Total Turnover
Week Ended on 02 Aug 2012	5,464.73	80,251,434	17,046,263	93,885	2,165,536	5,996	80,345,319	19,211,799
Week Ended on 09 Aug 2012	5,463.43	83,180,737	16,781,623	607,927	600,312	5,539	83,788,664	17,381,936
Var %	↓ -0.02%	↑ 3.65%	↓ -1.55%	↑ 547.52%	↓ -72.28%	↓ -7.62%	↑ 4.29%	↓ -9.52%

Date	No. of Traded Companies	No. of Companies Increased	No. of Companies Decreased	No. of Companies Stable
Week Ended on 02 Aug 2012	65	42	9	14
Week Ended on 09 Aug 2012	68	29	19	20



Market Capitalization (Million R.O)

Date	Regular Market	Parallel Market	Third Market	Bonds	Closed Companies	Total Market Cap.
Year Ended on 29 Dec 2011	6,542	471	11	559	2,759	10,342
Week Ended on 02 Aug 2012	6,593	715	12	804	2,916	11,040
Week Ended on 09 Aug 2012	6,578	716	12	847	2,916	11,069
WTW %	↓ -0.23%	↑ 0.13%	→ 0.00%	↑ 5.33%	↑ 0.03%	↑ 0.26%
YTW %	↑ 0.56%	↑ 51.92%	↑ 0.94%	↑ 51.54%	↑ 5.71%	↑ 7.03%



MSM Scoreboard for The Week Ended on 09 Aug 2012

Top 5 Gainers Based on Var % of Share Prices			
Company Name	Close Price	Previous Price	Var %
DHOFAR POULTRY	0.869	0.790	10.00%
GULF INT. CHEMICALS	0.164	0.152	7.89%
UNITED FINANCE	0.139	0.130	6.92%
CONSTRUCTION MATERIALS IND.	0.055	0.052	5.77%
TRANSULF IND. INV. HOLDING	0.077	0.074	4.05%

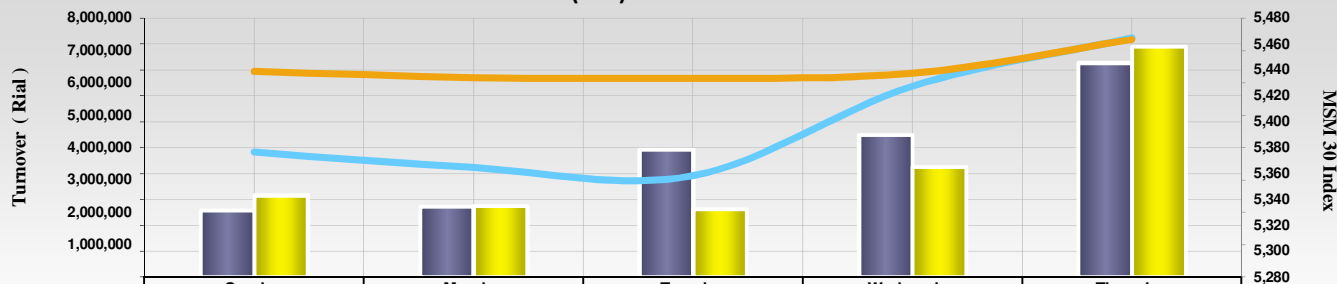
Top 5 Losers Based on Var % of Share Prices			
Company Name	Close Price	Previous Price	Var %
AL HASSAN ENGINEERING	0.135	0.143	-5.59%
AL BATINAH DEV. INV. HOLDING	0.060	0.062	-3.23%
OMAN CHLORINE	0.480	0.495	-3.03%
AL SHARQIA INVESTMENT HOLDING	0.097	0.100	-3.00%
OMAN TELECOMMUNICATION	1.325	1.354	-2.14%

Top 5 Securities Traded Based on Value			
Company Name	Turnover	Close Price	Turnover % Out Of Total
BANK MUSCAT	2,844,331	0.531	16.36%
BANK NIZWA	1,348,243	0.108	7.76%
RAYSUT CEMENT	1,317,124	1.346	7.58%
AHLI BANK	1,268,316	0.150	7.30%
BANK SOHAR	877,234	0.139	5.05%
Total	7,655,249	--	44.04%

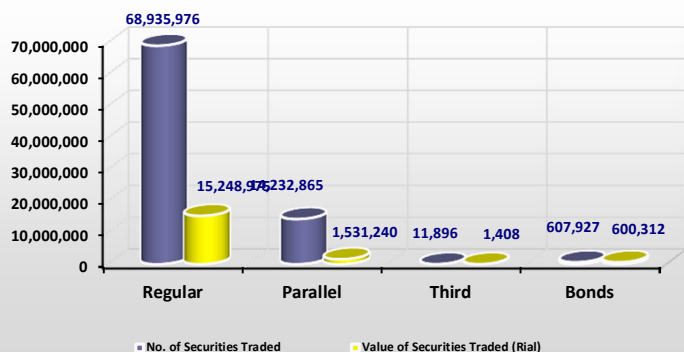
Top 5 Securities Traded Based on Volume			
Company Name	No. of Shares Traded	Close Price	Shares % Out Of Total
BANK NIZWA	12,497,858	0.108	14.92%
GULF INVESTMENT SER.	10,302,664	0.079	12.30%
AHLI BANK	8,600,102	0.150	10.26%
GLOBAL FINANCIAL INVESTMENT	7,707,548	0.093	9.20%
BANK SOHAR	6,267,816	0.139	7.48%
Total	45,375,988	--	54.16%



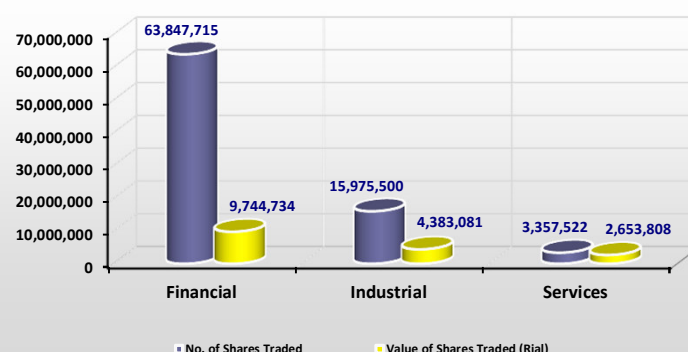
MSM 30 Index & Turnover (Rial) of Last Week & This Week



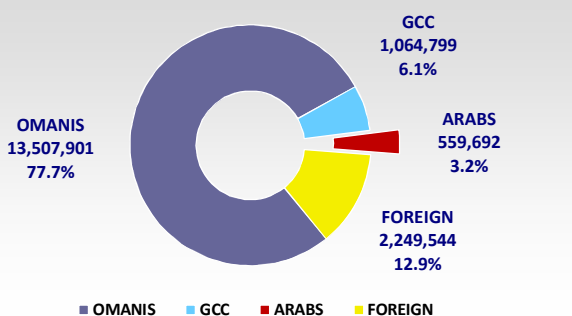
Trading Activity of this Week - (Market-wise)



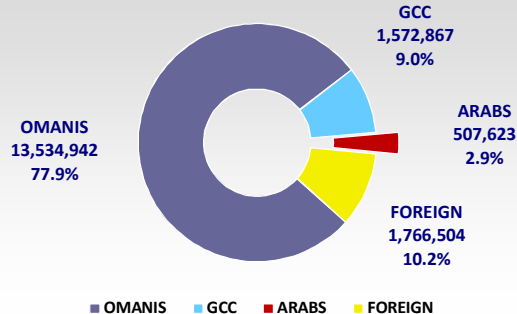
Trading Activity of this Week - (Sector-wise)



Local & foreign purchase values



Local & foreign selling values



Sell & Buy by Groups for The Week Ended on 09 Aug 2012

Buy

Group	No. of Shares	Volume By (%)			Turnover	Turnover By (%)		
		Individuals	Institutions	Total		Individuals	Institutions	Total
OMANIS	69,816,063	39.92 %	43.40 %	83.32 %	13,507,901	25.77 %	51.94 %	77.71 %
GCC	4,769,078	0.14 %	5.56 %	5.69 %	1,064,799	0.31 %	5.82 %	6.13 %
ARABS	4,343,127	5.18 %	0.00 %	5.18 %	559,692	3.22 %	0.00 %	3.22 %
FOREIGN	4,860,396	1.33 %	4.48 %	5.80 %	2,249,544	1.43 %	11.52 %	12.94 %
Total	83,788,664	46.57 %	53.43 %	100 %	17,381,936	30.73 %	69.27 %	100 %

Sell

Group	No. of Shares	Volume By (%)			Turnover	Turnover By (%)		
		Individuals	Institutions	Total		Individuals	Institutions	Total
OMANIS	70,048,874	48.14 %	35.46 %	83.60 %	13,534,942	34.98 %	42.89 %	77.87 %
GCC	4,793,718	0.26 %	5.46 %	5.72 %	1,572,867	0.25 %	8.80 %	9.05 %
ARABS	4,252,446	5.08 %	0.00 %	5.08 %	507,623	2.92 %	0.00 %	2.92 %
FOREIGN	4,693,626	2.18 %	3.42 %	5.60 %	1,766,504	1.74 %	8.42 %	10.16 %
Total	83,788,664	55.65 %	44.35 %	100 %	17,381,936	39.89 %	60.11 %	100 %